

Viola

CANADIAN FOLK SONG MELODIES

Play the songs individually or as a medley.

1 Brave Wolfe

2 3 4 5 6 7 8 9 10 11 12 13 14 15 16 17 1. 18 2.

Detailed description: This block contains the musical notation for the first song, 'Brave Wolfe'. It is written in bass clef with a key signature of one flat (B-flat) and a 4/4 time signature. The melody consists of 18 measures. Measures 1-4 form the first phrase, measures 5-8 the second, and measures 9-12 the third. Measures 13-16 form a fourth phrase, and measures 17-18 are a final phrase with a first and second ending. The first ending leads back to the beginning of the piece, and the second ending concludes with a double bar line and a 2/4 time signature change.

Donkey Riding

19 20 21 22 23 24 25 26 27 28 29 30 31 32 33 34 1. 35 2.

Detailed description: This block contains the musical notation for the second song, 'Donkey Riding'. It is written in bass clef with a key signature of one flat (B-flat) and a 2/4 time signature. The melody consists of 17 measures. Measures 19-21 form the first phrase, measures 22-25 the second, and measures 26-29 the third. Measures 30-33 form a fourth phrase, and measures 34-35 are a final phrase with a first and second ending. The first ending leads back to the beginning of the piece, and the second ending concludes with a double bar line and a 2/4 time signature change.

## The Squid-Jiggin' Ground

Musical score for "The Squid-Jiggin' Ground". The piece is in 2/4 time and consists of 58 measures. The notation is written on a grand staff (treble and bass clefs). The melody is primarily composed of quarter notes and half notes, with some eighth notes. Measure numbers 36 through 58 are indicated above the notes. A repeat sign is present at the beginning of measure 36. A double bar line with first and second endings is located at the end of measure 58.

## We'll Rant and We'll Roar

Musical score for "We'll Rant and We'll Roar". The piece is in 6/8 time and consists of 68 measures. The notation is written on a grand staff (treble and bass clefs). The melody is primarily composed of eighth notes and quarter notes. Measure numbers 59 through 68 are indicated above the notes. A repeat sign is present at the beginning of measure 60. A double bar line with first and second endings is located at the end of measure 68.

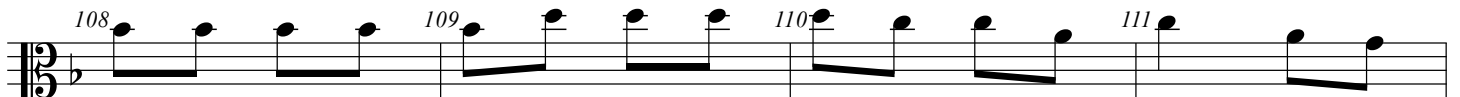
En Roulant Ma Boule

Musical score for 'En Roulant Ma Boule' in 6/8 time. The score consists of seven staves of music. The first staff begins with a treble clef, a key signature of one flat (B-flat), and a 6/8 time signature. The melody starts at measure 69. The second staff contains measures 70 through 75, with first and second endings indicated by bracketed lines above the staff. The third staff contains measures 76 through 79. The fourth staff contains measures 80 through 83. The fifth staff contains measures 84 through 87. The sixth staff contains measures 88 through 90, with first and second endings indicated. The piece concludes with a double bar line and a 2/4 time signature.

The Little Sod Shanty

Musical score for 'The Little Sod Shanty' in 2/4 time. The score consists of two staves of music. The first staff begins with a treble clef, a key signature of one flat (B-flat), and a 2/4 time signature. The melody starts at measure 91. The second staff contains measures 92 through 99, with a slur over measures 98 and 99.

## Canadian Folk Song Melodies

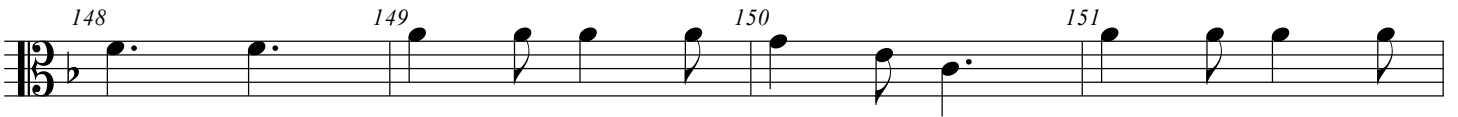


Ah! Si Mon Moine Voulait Danser!





I'se The By' That Builds the Boat



A La Claire Fontaine



164 165 166 167 168

Musical notation for measures 164 to 168. The staff is in bass clef with a key signature of one flat (B-flat) and a 2/4 time signature. The melody consists of eighth and quarter notes.

**Vive La Canadienne!** 169 170 171

Musical notation for measures 169 to 171. The staff is in bass clef with a key signature of one flat and a 2/4 time signature. The melody continues with eighth and quarter notes.

172 173 174 175

Musical notation for measures 172 to 175. The staff is in bass clef with a key signature of one flat and a 2/4 time signature. The melody continues with eighth and quarter notes.

176 **Fine** 177 178 179

Musical notation for measures 176 to 179. Measure 176 ends with a double bar line and the word "Fine". Measure 177 begins with a repeat sign. The staff is in bass clef with a key signature of one flat and a 2/4 time signature.

180 181 **D.S. al Fine**

Musical notation for measures 180 to 181. The staff is in bass clef with a key signature of one flat and a 2/4 time signature. Measure 181 ends with a double bar line and a repeat sign. The instruction "D.S. al Fine" is placed above the staff.