

Tuba

CANADIAN FOLK SONG MELODIES

Play the songs individually or as a medley.

Brave Wolfe

Musical notation for the tuba part of 'Brave Wolfe'. The piece is in bass clef, 4/4 time, and B-flat major. It consists of 18 measures. Measure 1 is a whole rest. Measure 2 is a repeat sign. Measures 3-18 contain the melody. Measure 18 ends with a double bar line and a key signature change to D-flat major (two flats) and a 2/4 time signature.

Donkey Riding

Musical notation for the tuba part of 'Donkey Riding'. The piece is in bass clef, 2/4 time, and B-flat major. It consists of 17 measures. Measure 19 is a repeat sign. Measures 20-35 contain the melody. Measure 35 ends with a double bar line and a key signature change to D-flat major (two flats) and a 2/4 time signature.

The Squid-Jiggin' Ground

36 37 38

39 40 41 42

43 44 45 46

47 48 49 50

51 52 53 54

55 1. 56 2. 57 58

We'll Rant and We'll Roar

59 60 61 62

63 64 65 66 67 1. 68 2.

En Roulant Ma Boule

69 70 71

72 1. 73 2. 74 75

76 77 78 79

80 81 82 83

84 85 86 87

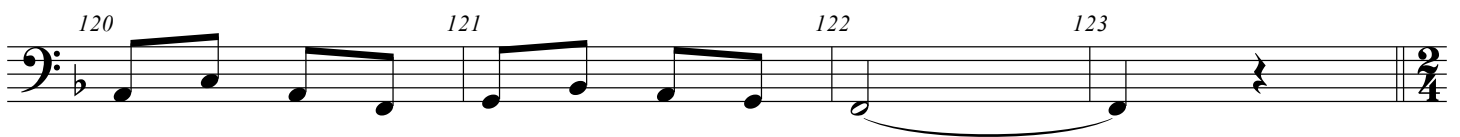
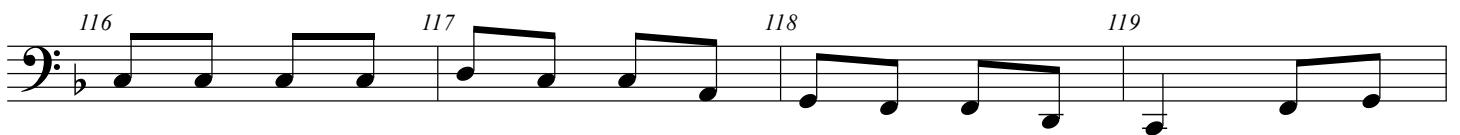
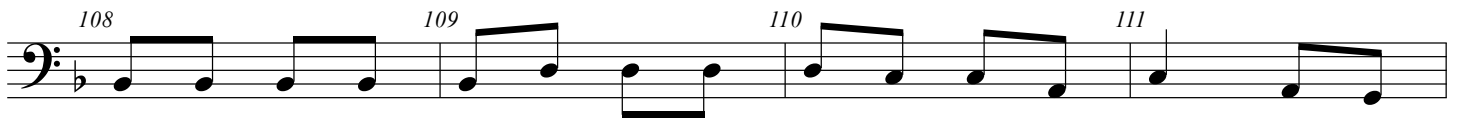
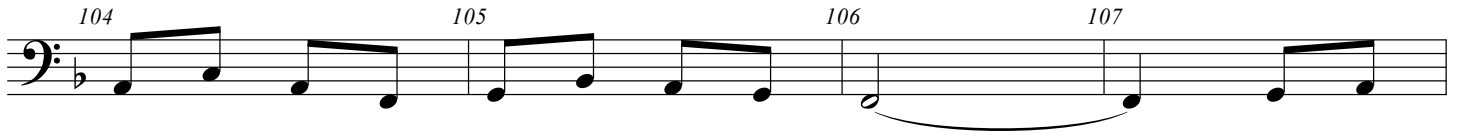
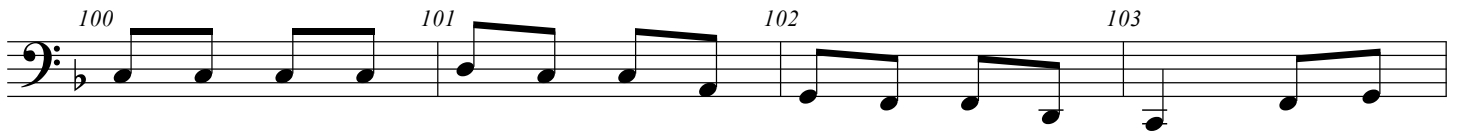
88 89 1. 90 2.

The Little Sod Shanty

91 92 93 94 95

96 97 98 99

Canadian Folk Song Melodies



Ah! Si Mon Moine Voulait Danser!



132 133 134 135

Musical notation for measures 132-135 in bass clef, 3/4 time. Measure 132: quarter, quarter, quarter. Measure 133: quarter, quarter, quarter. Measure 134: quarter, quarter, quarter. Measure 135: quarter, quarter, quarter.

136 137 138 139 140

Musical notation for measures 136-140 in bass clef, 3/4 time. Measure 136: quarter, quarter, quarter. Measure 137: quarter, quarter, quarter. Measure 138: quarter, quarter, quarter. Measure 139: quarter, quarter, quarter. Measure 140: quarter, quarter, quarter. Ends with a double bar line and repeat sign.

I'se The By' That Builds the Boat

141 142 143

Musical notation for measures 141-143 in bass clef, 6/8 time. Measure 141: quarter, quarter, quarter. Measure 142: quarter, quarter, quarter. Measure 143: quarter, quarter, quarter.

144 145 146 147

Musical notation for measures 144-147 in bass clef, 6/8 time. Measure 144: quarter, quarter, quarter. Measure 145: quarter, quarter, quarter. Measure 146: quarter, quarter, quarter. Measure 147: quarter, quarter, quarter.

148 149 150 151

Musical notation for measures 148-151 in bass clef, 6/8 time. Measure 148: quarter, quarter, quarter. Measure 149: quarter, quarter, quarter. Measure 150: quarter, quarter, quarter. Measure 151: quarter, quarter, quarter.

152 153 154 155 156

Musical notation for measures 152-156 in bass clef, 6/8 time. Measure 152: quarter, quarter, quarter. Measure 153: quarter, quarter, quarter. Measure 154: quarter, quarter, quarter. Measure 155: quarter, quarter, quarter. Measure 156: quarter, quarter, quarter. Ends with a double bar line and repeat sign.

A La Claire Fontaine

157 158 159

Musical notation for measures 157-159 in bass clef, 2/4 time. Measure 157: quarter, quarter. Measure 158: quarter, quarter. Measure 159: quarter, quarter.

160 161 162 163

Musical notation for measures 160-163 in bass clef, 2/4 time. Measure 160: quarter, quarter. Measure 161: quarter, quarter. Measure 162: quarter, quarter. Measure 163: quarter, quarter.

164 165 166 167 168

♩ **Vive La Canadienne!**
169 170 171

172 173 174 175

176 **Fine** 177 178 179

D.S. al Fine
180 181